

Model L70GLZIP

Round Damper • 7⁵/₈" Deep • Single Thickness Blade • Volume Control • For Remote Locations • Galvanized Steel

For use to 1 in. w.g. and 1500 FPM

STANDARD CONSTRUCTION

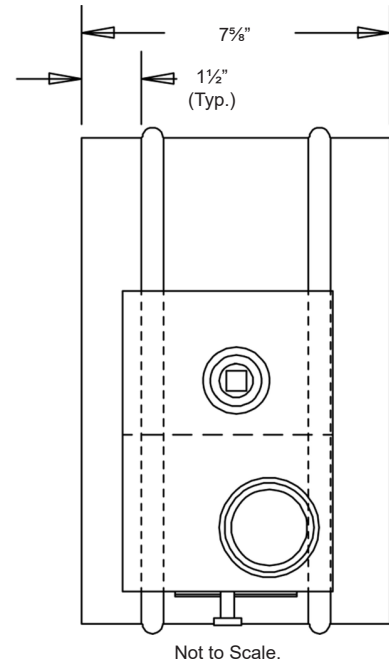
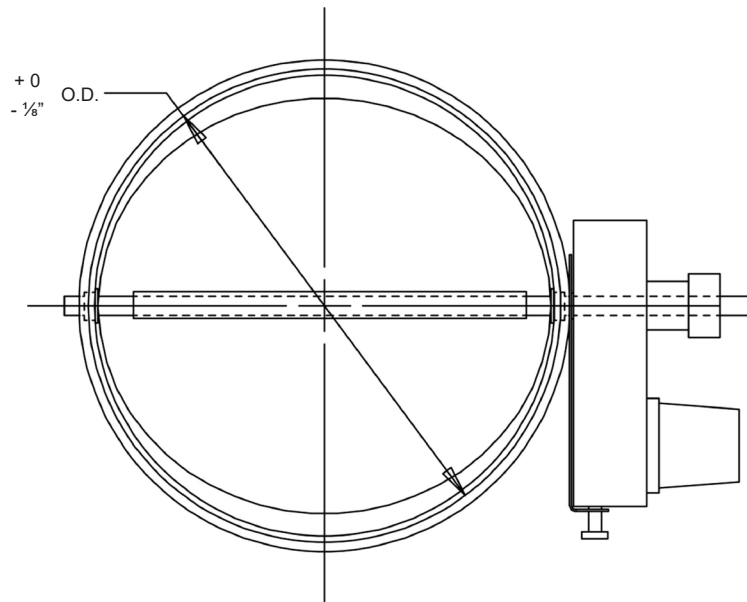
- FRAME:** 22 GA. galvanized steel, 7⁵/₈" deep with reinforcing ribs.
- BLADE:** 24 GA. galvanized steel.
- SHAFT:** 3/8" square aluminum, continuous length, with positive interlock to blade.
- BEARINGS:** Zytel plastic snap-in.
- ACTUATOR:** Gear drive fail in place. Power requirements 9 volt DC, powered through DC-1 or RCM-3 remote control.
- TEMP LIMIT:** 250°F.
- FINISH:** Mill.


NOTES

1. Nominal deductions will be made to the opening size given.
2. Round dampers are available in 1" increments only.
3. This damper is designed for air balancing for individual branch and zone control at difficult or remote locations. Damper balancing adjustments are quick and precise using a hand-held remote controller to adjust damper blade position.
4. This damper assembly does not require a continuous power source and is a "green-friendly product".
5. To calculate approximate shipping weight (lbs./in.), use the following formula:
Diameter (in.) × 0.45 (lbs./in.)

DAMPER SIZES

Min Dia.	Max Dia.
4" O.D.	16" O.D.



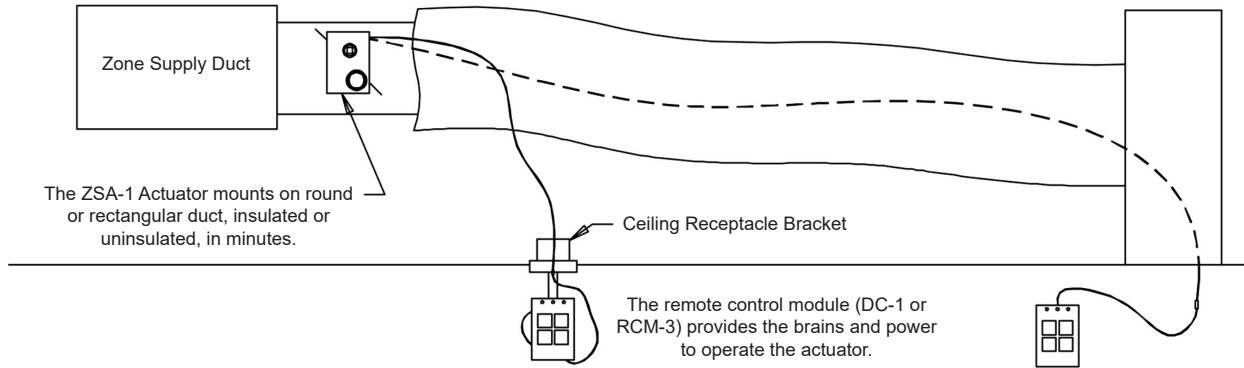
						
Item #	Qty	Damper Size O.D.	Tagging		Remarks	
			EDR:	ECN:	Job:	Union Made
Arch. / Eng.:						
Contractor:						
Project:			Date:	DWN:	DWG:	

In the interest of product development, Louvers & Dampers reserves the right to make changes without notice.

Model L70GLZIP

Round Damper • 7 $\frac{5}{8}$ " Deep • Single Thickness Blade • Volume Control • For Remote Locations • Galvanized Steel

Wireless Remote Control System for Air Balancing Damper Adjustments



The ZSA-1 Actuator mounts on round or rectangular duct, insulated or uninsulated, in minutes.

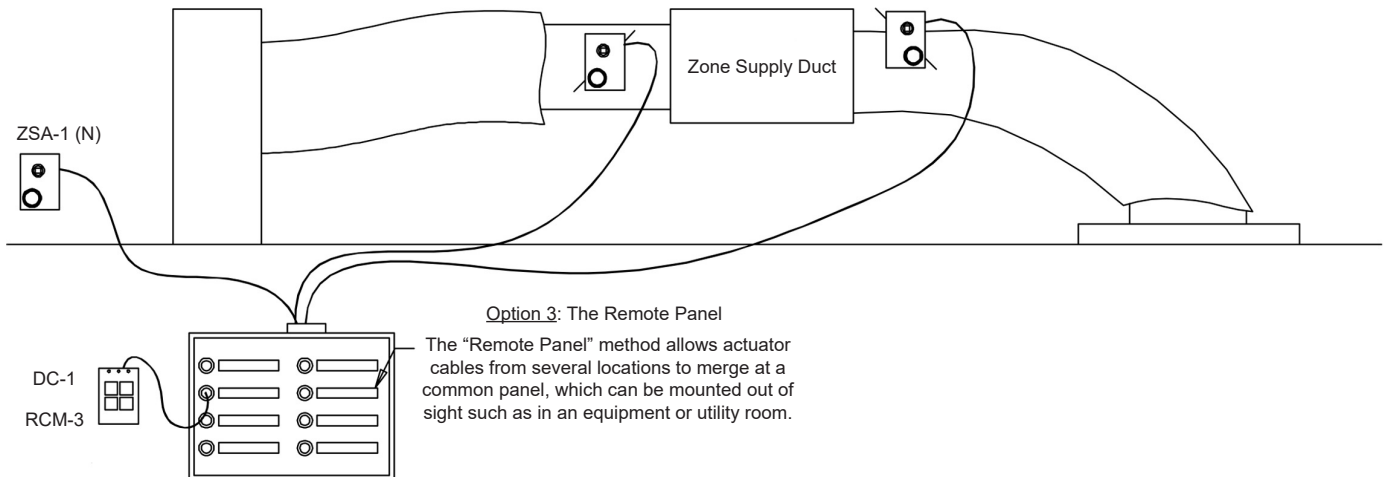
The remote control module (DC-1 or RCM-3) provides the brains and power to operate the actuator.

Option 1: The Ceiling Receptacle Bracket

The "Ceiling Receptacle Bracket" interface method is well suited to wireless remote adjustment of the balancing damper.

Option 2: The Feed Thru

The "Feed Thru" method quick and easy and avoids having to drill a hole in the plenum or diffuser back pan for the power/signal cable.



Option 3: The Remote Panel

The "Remote Panel" method allows actuator cables from several locations to merge at a common panel, which can be mounted out of sight such as in an equipment or utility room.